

Programme 2024

Lectures take place in the Floral Hall,
Hornsea, HU18 1NQ at 10.30 a.m.

Coffee is available in the café from 10.00 a.m.

18th January: Gillian Hovell: *The Grand Mediterranean Tour*

In the past the elite toured Europe. Which ancient sites did they visit? What civilizations have we unearthed since?



15th February: Simon Seligman: *The elemental land art of Julie Brook*

Julie's range of work over four decades in some of the world's wild places, centred always on her passion for the islands and coast of West Scotland.



March 21st: Bertie Pearce: *The Dancing Faun*

The personal story of a 16th century masterpiece which stood in his grandfather's garden for 40 years, now in the Getty Museum.



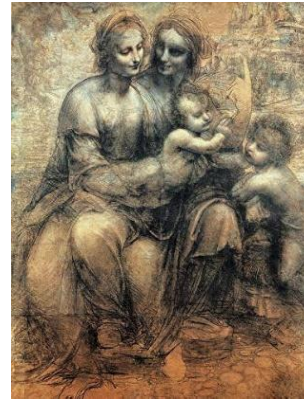
18th April: Lynne Gibson: *2B or Not 2B*

Drawing plays a key role in an artist's training. Discover the drawing techniques, tools and materials of the Great Masters.



June 20th: Matthew Williams: *Burned, Bombed or Bulldozed*

The sad story of country houses lost to our National Heritage for a variety of reasons.



May 16th: Jenny Scruton: *Beverley and the Elwells*

Three generations of the Beverley family who made an artistic contribution to their home town.



July 18th: Tim Stimson: *Atkinson Grimshaw*

Known mainly for his moonlit landscapes, Atkinson Grimshaw's range is much wider than is generally known.

19th September: Marilyn Elm *The art of the garden - indoors*

A potted history of displaying flowers and plants in the home, illustrating the wonderful works of art used to exhibit such plant displays.



October 17th: John Ericson: *The Corkscrew, a thing of beauty*

John shares his enthusiasm for corkscrews, tracing their development from the 18th century while demonstrating some of the more

intriguing and bizarre mechanisms for extracting corks from bottles!

21st November: Jenny Scruton: *Bygone Beverley*

Lost landmarks of Beverley revealed in old photos and paintings.



The Annual General Meeting will take place before the November lecture