

Woodwork 300

Practical hints

Woodwork abounds. Many pieces are small and look un-important, but everything must be listed and thus given a number. Do this at the very start. It can be amended as you go, but a list is essential

Start at the East end and make a list going around clockwise.

In the Sanctuary the principal pieces will be the altar table, maybe a reredos, Sanctuary chairs, credence table, then Communion rails.

Choir stalls follow in the Chancel & perhaps a screen, then coming into the body of the church will be the lectern and the pulpit

A brief description of the piece gives a reader an idea of what it is. The altar may be a sturdy table with stretchers(A) or an enclosed framed box(B). Then go into details of structure and decoration.. The table possibly has consecration crosses on its upper surface...there will be five.

so

Three very different chairs are shown. The first a bishop's chair with frame, panelling and a a lot of decoration. Don't be too detailed, photos can save a lot of words. Then a very plain one with some tooling and a medallion; and a plain Glastonbury chair

Reredos



Plan

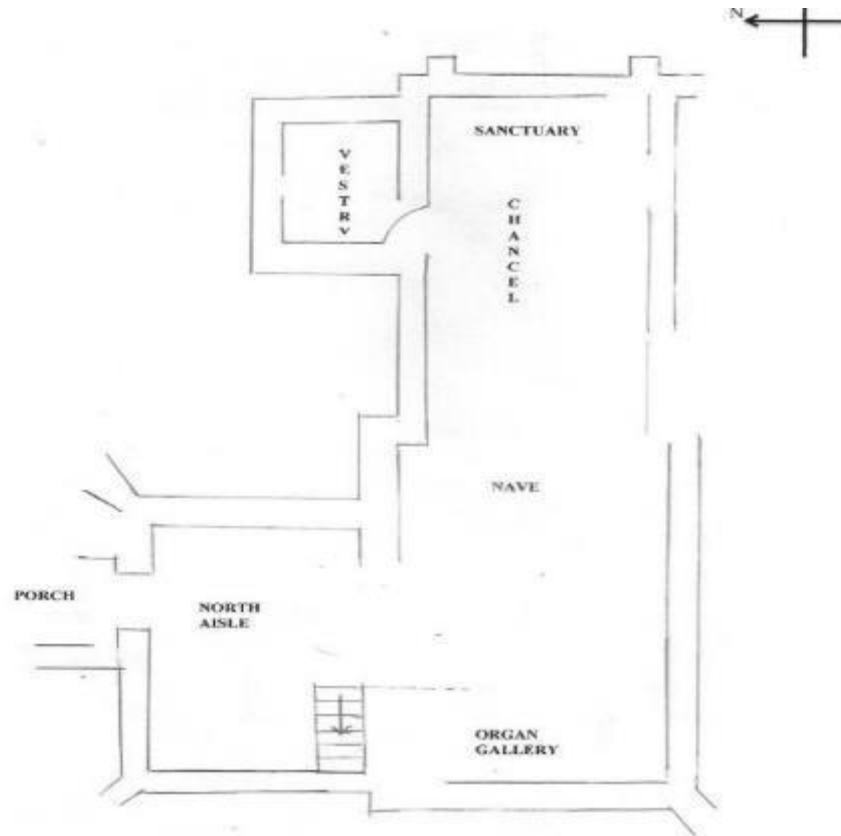


Table
Altar



Box
Altar



Sanctuary chairs



Chairs

Three very different chairs

The first a bishop's chair with frame, panelling and a lot of decoration.

Don't be too detailed, photos can save a lot of words.

Then a very plain one with some tooling and a medallion containing the Sacred Monogram IHS

Third, Glastonbury chair

Choir stalls or Benches

- Bench front, stalls behind
- Poppyhead
- & coat of arms

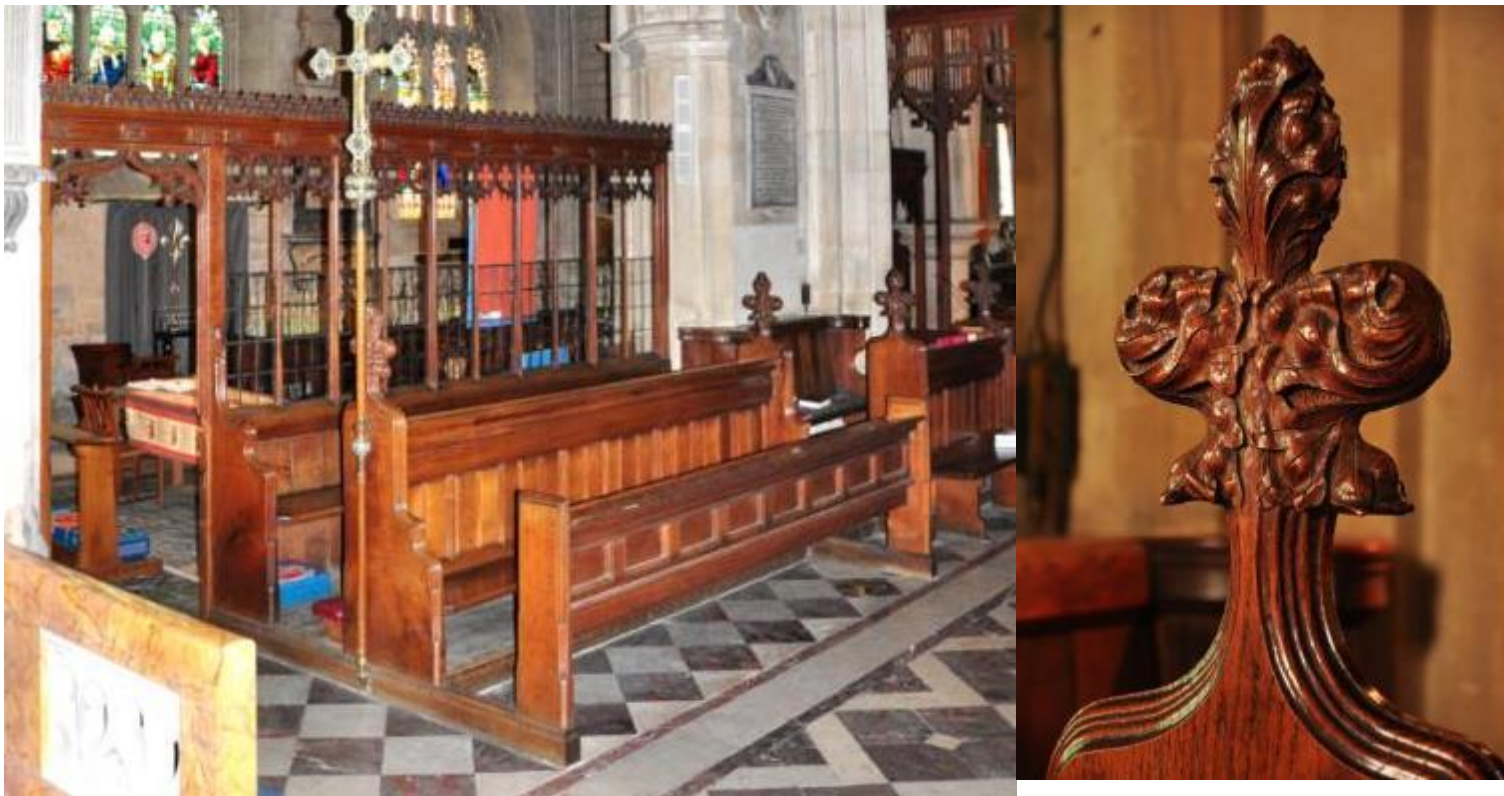


Choir Stalls

- Stalls can be quite complicated. Basically there are BENCHES & FRONTS, bench ends and book shelves and kneelers.
- Again do an overall 'impression' and then fill it out. The two sides of the chancel, N and S, will have similar benches. Do them together, and add differences when they occur.
- These fronts have framed blind panelling with applied carving in the upper part of each panel.
- A bench end can have an ornate upper carving called a poppy head, and this one shown carries a coat of arms of the Bishop of Salisbury.
- Are there attached lights/candlesticks ?
- Ask yourself 'would the lights be here without the stalls?' No so add them in at the end of descriptions at 1.
- There may be a plaque or two as well, possibly 'In Memory of....'

Choir stalls and Poppyhead

- Plainer ones here, but with tall poppyheads. (Screen behind)

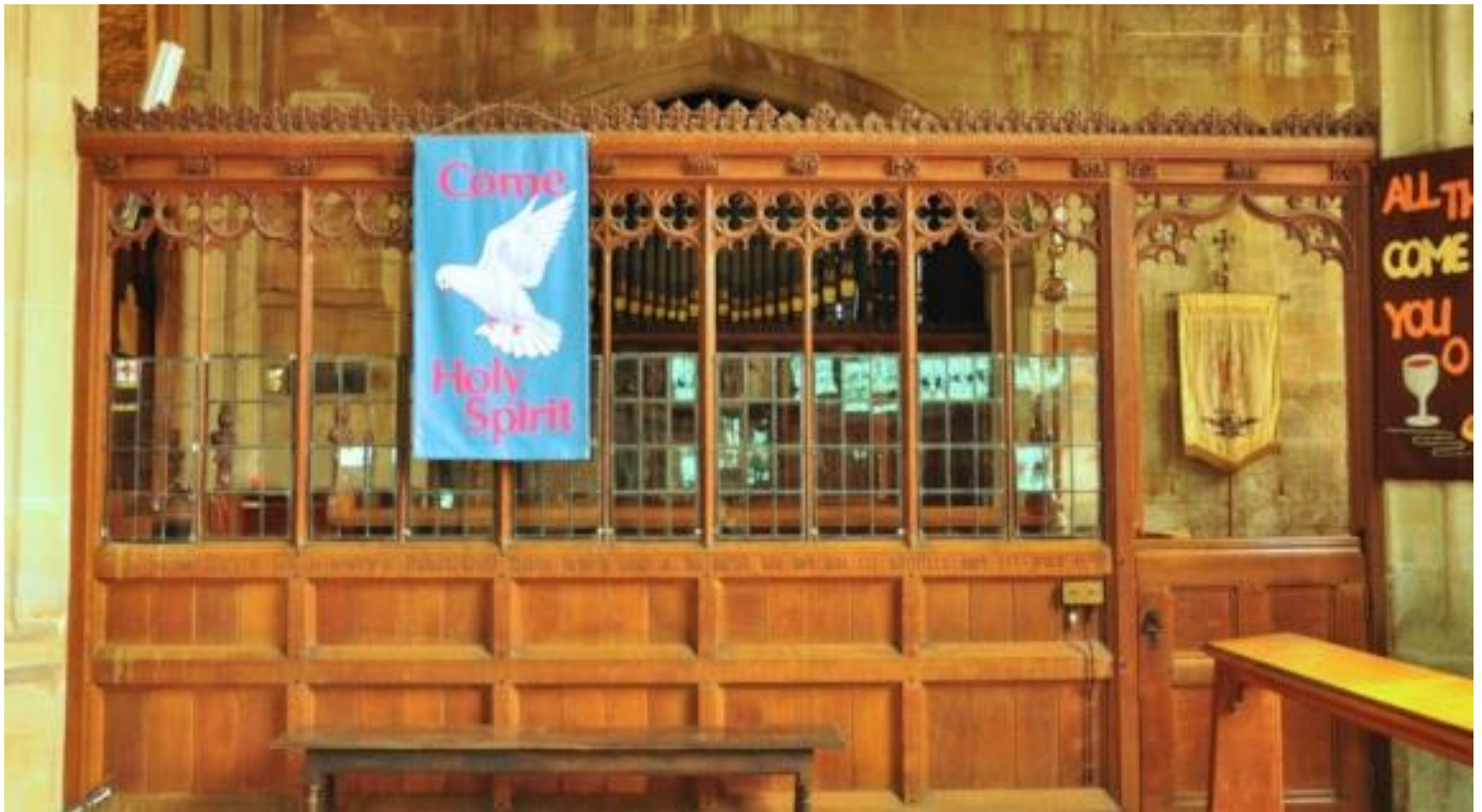


Screens

- These may be behind the Chancel choir benches, N and S, cutting off the chapel or vestry behind, or they may be across the Chancel steps.
- Often the upper part is of open panels with tracery details, and below are blind panels. A door maybe, or metal gates. Above all runs the frieze and cresting rail.
- Occasionally a Rood remains above with Christ on the Cross with the figures of Mary and John.
- All quite elaborate, but photo details will help to cut down the words.
- (Inside Churches has very helpful diagrams)

Choir screen/Lady Chapel

Six bays, 2 open panels with tracery headings. And a doorway.
A row of paterae in a concave rail and a cresting rail with brattishing



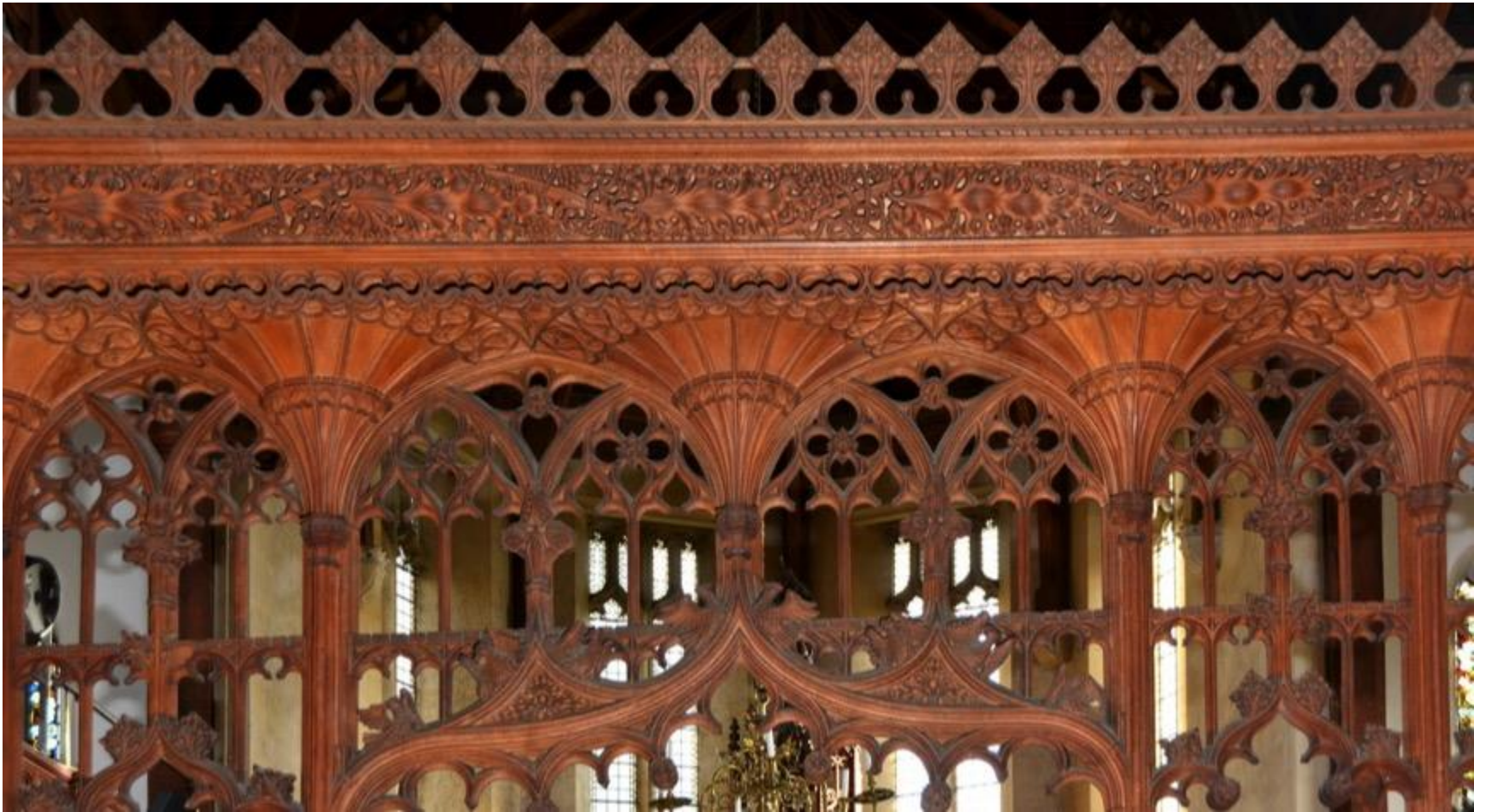
Chancel screen

choir screens behind



Chancel screen, details.

A close-up photo allows a much shorter description



Screen with Rood



Pulpits & lecterns

- PULPITS come in all shapes and sizes and materials. If the upper part where the priest stands to preach is of WOOD, then the whole edifice including a stone base, brass desk and candlesticks comes in Woodwork.
- Don't forget the stairs to get there and the brass rail! [not the pulpit fall here in green ; that is for Textiles.]
- Much the same applies for for Lecterns: the book desk/self often with an eagle as support, is the operative part. So if that is wood record it all in wood; it may have a brass or iron stand.

Pulpits





Lecterns



- Benches Many have been added in the 19th or 20th c. Some decorated some quite plain. Describe the construction concisely.
- Measure them and state lengths from say 156 to 250 cm, h of back, h of seat. Draw the positions onto a plan.
- You may get lucky and find some really old ones with carved bench ends.
- Photos here will help a lot, plus a general description.

Pine benches

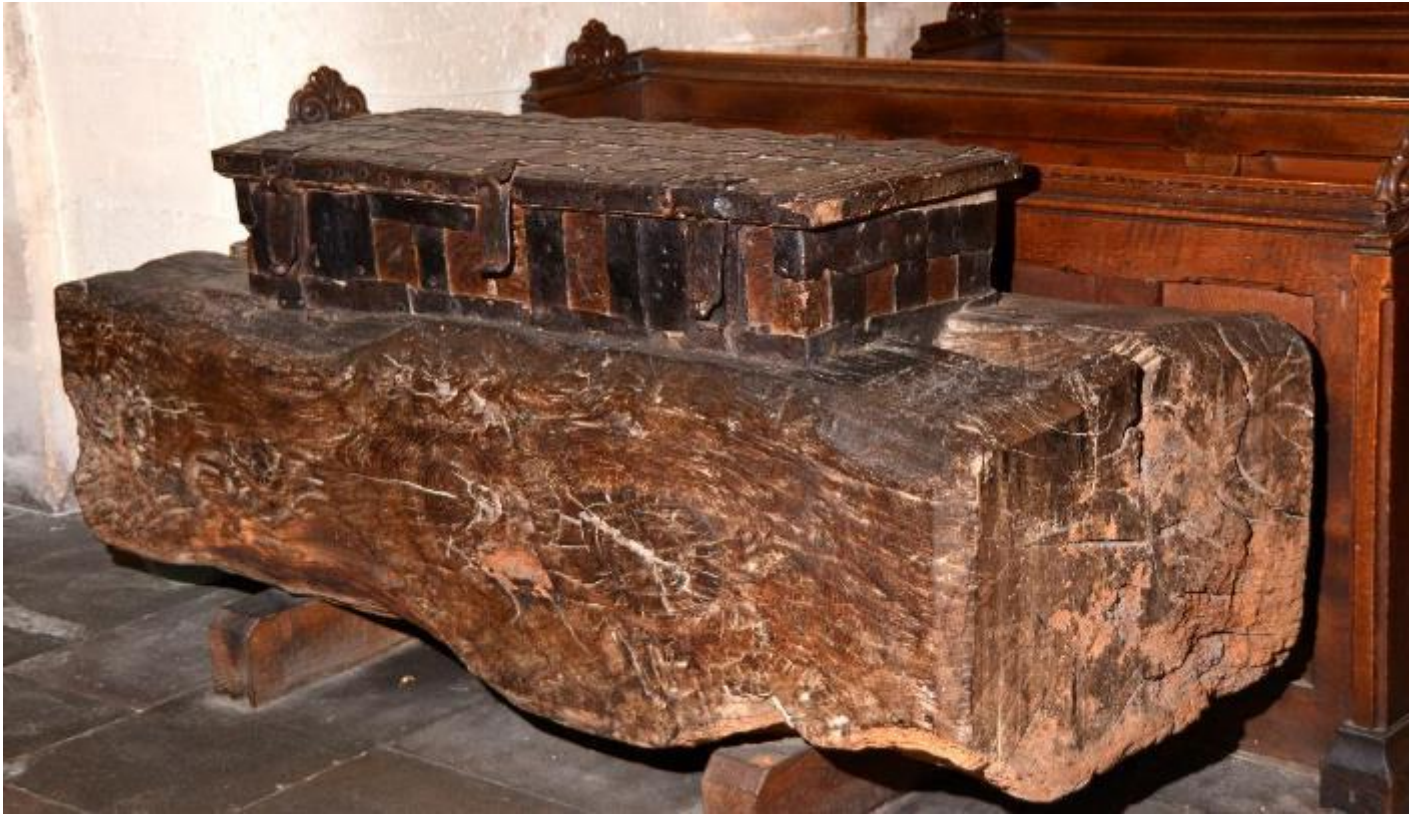
window shaped applied tracery on bench ends



Oak benches



Chests, Ancient



An old Chest and a Hymnboard.

(not old but still must be recorded)



Credence table(flat top) and a Prie Dieu



stools



Coffin stools



Doors

old and not-so-old



Old Entrance Door & Belfry door



Nave roof with king post, decorative infills, coffered panels 15th c
Roof decorated with sacred symbols. 1912



A barrel roof with wall plate inscription



Coffered roof

2 decorated bosses, resting on stone corbels



Barrel roof

with plastered panels



Roof with queen posts



