

## FABRIC DESIGNS

Most of the original designs of damasks and brocades on the printed sheets issued years ago by NADFAS to Church Recorders were supplied by M. Perkins & Sons Ltd. They have been confirmed and are repeated here. It has not been possible to confirm the suppliers of the designs Large Rose or St Cuthbert shown on the original sheets. Slightly confusingly, Perkins say they use the names of “Braganza” and “Aragon” for the same design of fabric.

Please include the name of the company with the design, eg “Frontal in Perkins’ *Abbey* brocade.....”

The Perkins firm now have a useful website in colour but beware - they use “brocade” for what CRs call damask or tapestry. <https://www.mperkins.co.uk/yarn-dyed-brocade>

Vanpoules have provided examples of Crown and Pomegranate, St Bede, St Benedict, St David, and Venetian Tapestry, also repeated here.

Their catalogue can be down-loaded from [www.vanpoules.co.uk](http://www.vanpoules.co.uk) and pages 72-73 show examples of their current 23 designs, some repeated by the other companies.

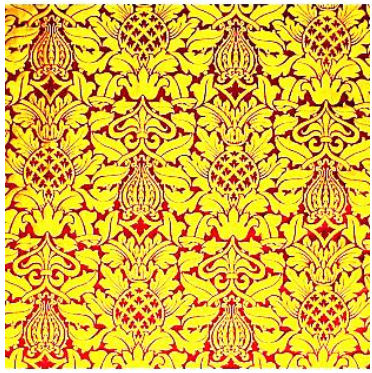


J. Wippell & Co. Ltd have samples of 29 designs on their website [www.wippell.co.uk](http://www.wippell.co.uk) , some being the same as other companies. If a photograph of the unknown textile is sent to Wippells they will try to identify it in case it is from their archive.

Watts show 20 designs on their website [www.watts1874.co.uk](http://www.watts1874.co.uk) ; Aragon, Chelmsford, Ely, Fairford, Florence, Lichfield and St Nicholas **can be found on other websites**; Bellini, Chaldean, Cheadle, Comper Cathedral, Comper Strawberry, Coronation, Crevelli, Evesham, Holbein, Memlinc, Gothic, St Hubert, Van der Weyden are specific to Watts.

M. Perkins, Wippell, and Vanpoules are thanked for their help and permission to use their designs on the Church Recorders’ website.

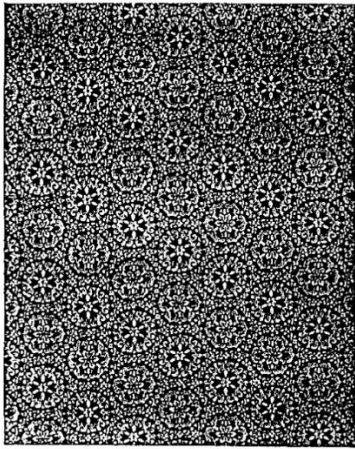
## WATTS FABRIC DESIGNS

**These are just a few of the Watts’ designs - for more see the Watts website.**

		
Fairford Brocade	Venezia gold	Ludlow

		
<p>Davenport</p>	<p>Coronation</p>	<p>Goya</p>
		
<p>Cathedral</p>	<p>Crevelli</p>	<p>Gothic</p>
		
<p>Bellini</p>	<p>Florence red</p>	<p>Wakefield gold red</p>

## PERKINS FABRIC DESIGNS



**"ARUNDEL" BROCADE.**

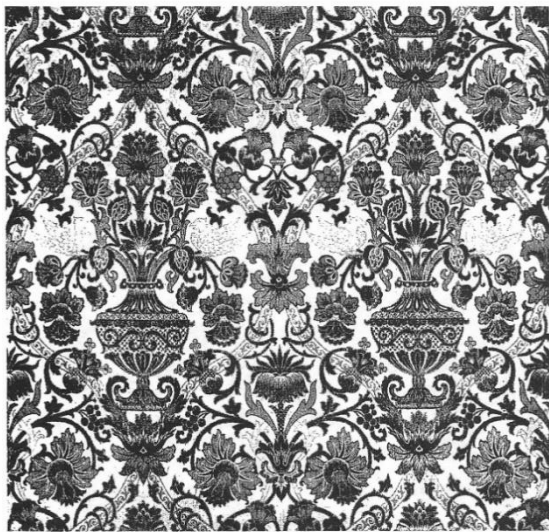
50 ins. wide  
The pattern repeats at 7½ ins.  
Print shows half-width

Designed by Geoffrey Webb, a pupil  
of J. Ninian Comper



**"BEVERLEY" BROCADE.**

50-ins. wide.  
The pattern repeats at 16 ins.

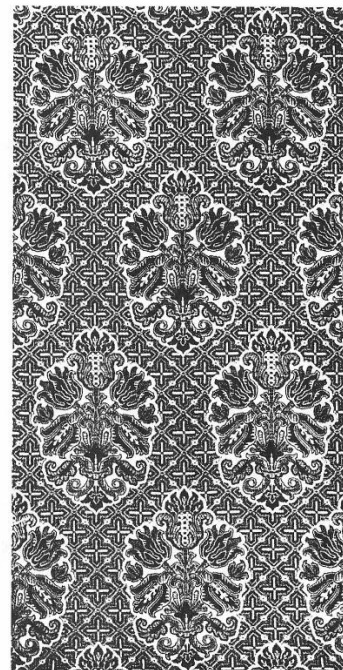


**"BRAGANZA" TAPESTRY.**

50 ins. wide

The rich colourings of this tapestry are copied from old  
Portuguese Embroidery, and will harmonize with almost  
any colour scheme.

The pattern repeats at 33 ins.

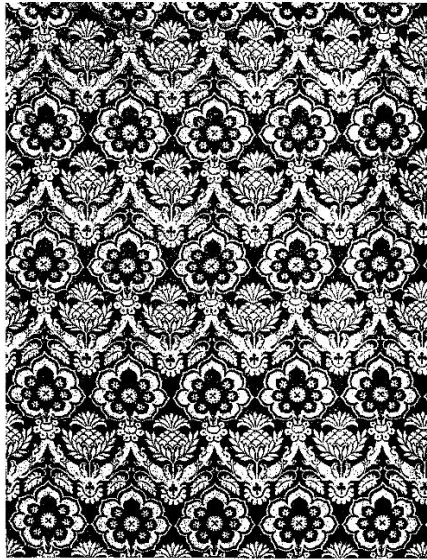


**"BRUGES" TAPESTRY**

(Silk/Cotton)

50" Wide

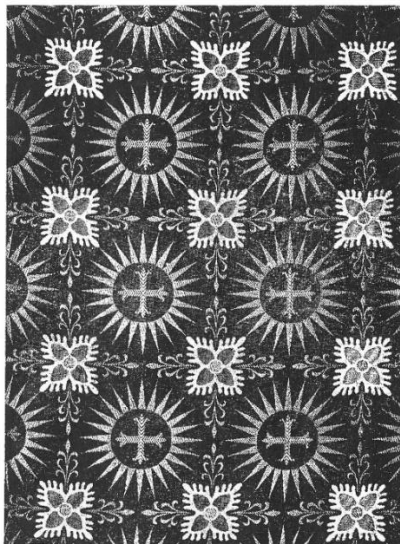
The pattern repeats at 22½"



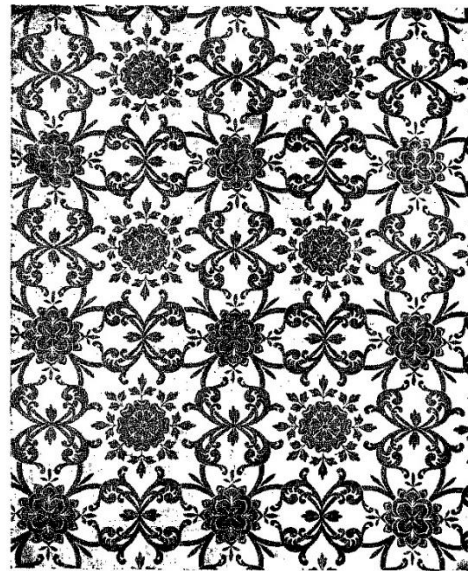
**“Canterbury” Damask.**  
 28-ins. wide  
 Pattern measures 6½-in. × 4-ins



**“CATHEDRAL” DAMASK.**  
 56 ins. wide.  
 Pattern repeats at 51 ins.



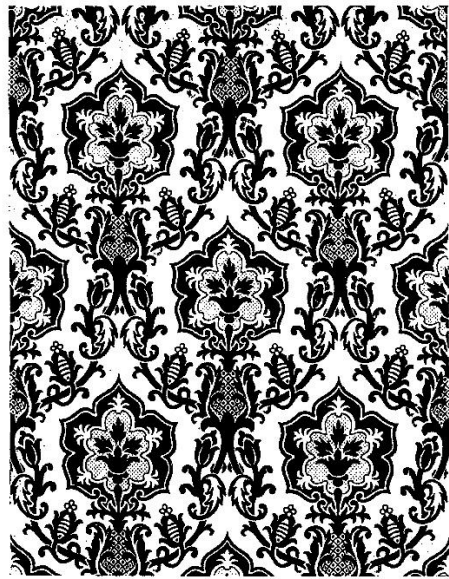
**“CANTUAR” BROCADE.**  
 50 ins. wide  
 The pattern repeats at 6½ ins. either way



**“CLOISTER” DAMASK.**  
 21 ins. wide,  
 Pattern measures 7½ ins. × 7 ins.  
 And can be used any way.



COMPER JAY

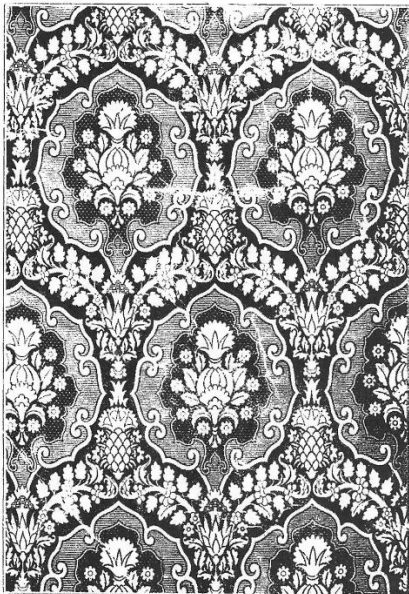


"GLOUCESTER" BROCADE.

50 ins. wide.

The pattern repeats at 18½ ins.

Print shows half-width.



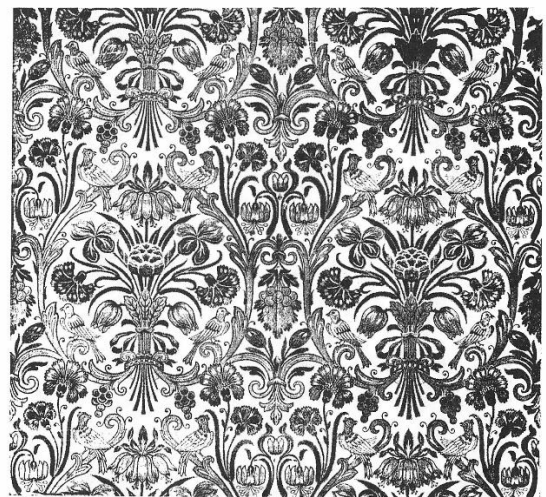
"Gothic Brocettele."

(Silk and Gold)

32 ins. wide

The above block shows two-thirds of the width.

The design repeats at 23½ ins.

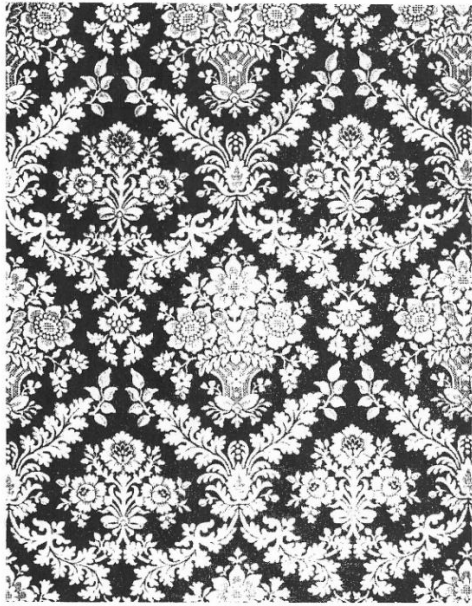


"GRANADA" TAPESTRY

50-ins. WIDE.

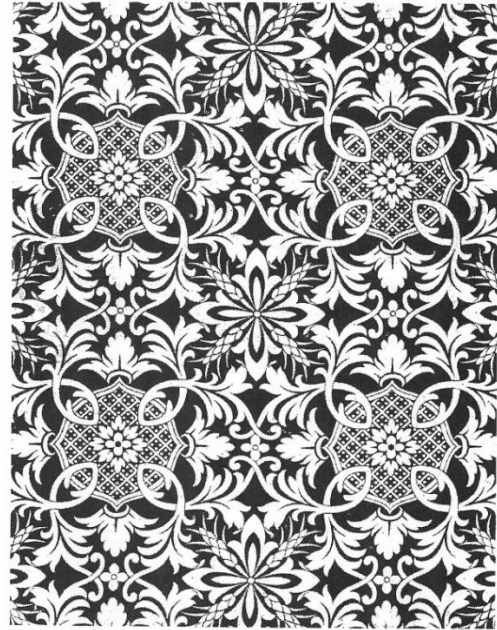
The Pattern repeats at 24½ ins.

This Diagram represents the full width of material



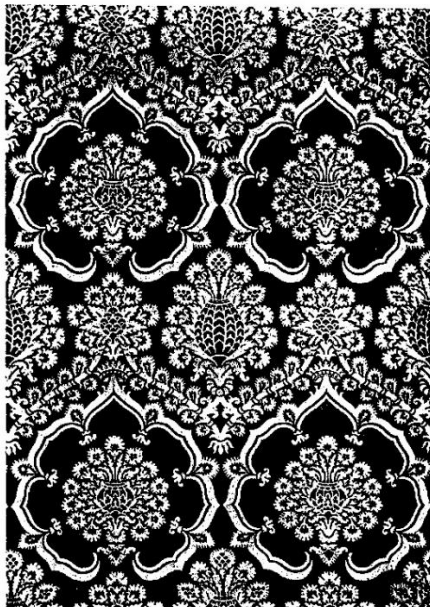
**"HEREFORD" BROCADE.**

50 ins. wide  
The pattern repeats at  $17\frac{3}{4}$  ins.  
Print shows half-width



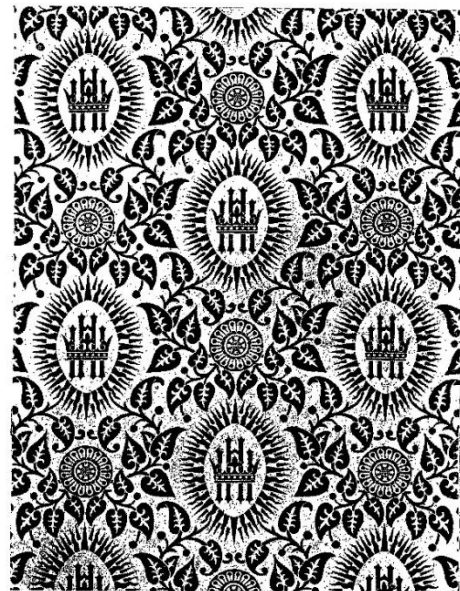
**"KIRKSTALL" BROCADE.**

52 ins. wide  
The pattern repeats at 13 ins.  
Print shows half-width



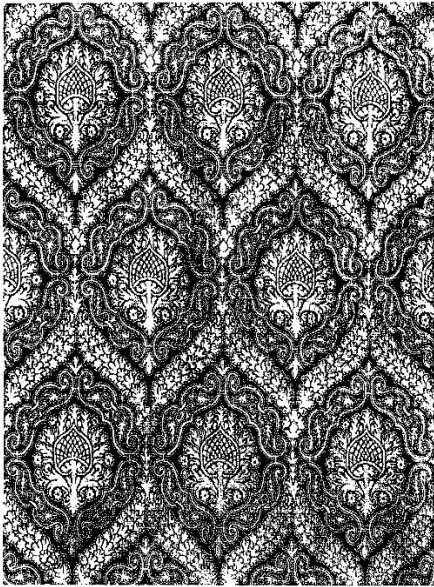
**"Mantua" Brocade**

50 ins. wide  
Pattern repeats at 18 inches



**"Monogram" Damask.**

28 ins. wide.  
Pattern repeats at 16 ins.



**"NEWARK" BROCADE**

(Drop Design)

50-ins WIDE.

The Pattern repeats at 20½-ins.

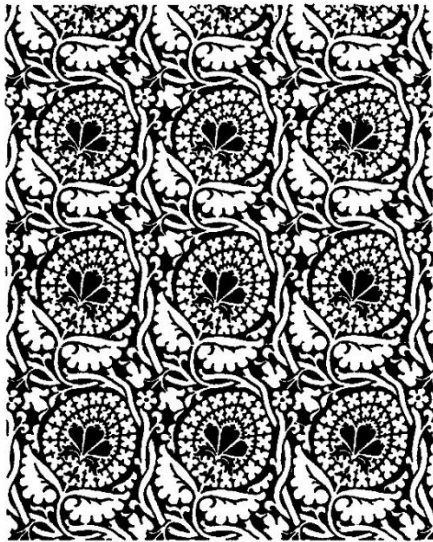


**"PALERMO" BROCADE**

52" Wide

Pattern repeats at 26½"

This print shows half the width

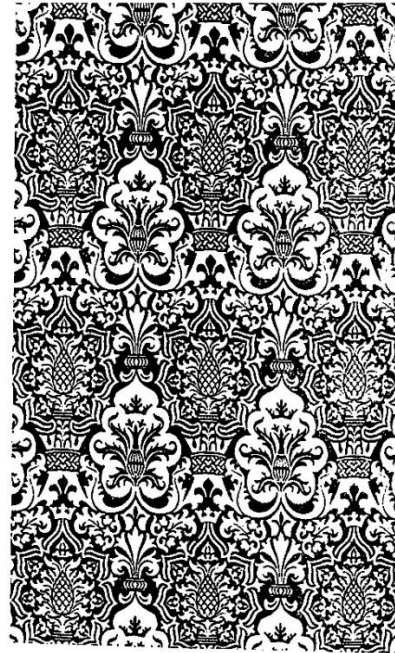


**"PEAR" BROCATTELLE**

(Comper)

28/29" Wide

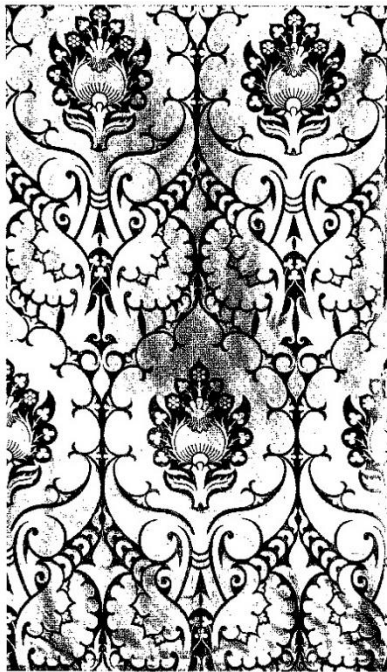
Size of pattern 6¼ x 5¼"



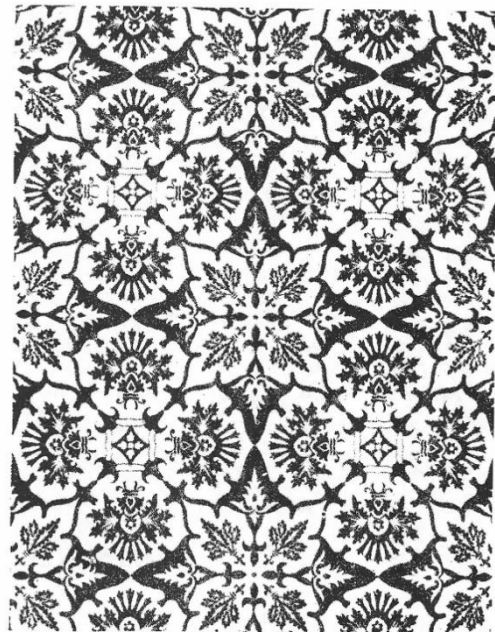
**"PINE" COTELINE.**

52 in. wide.

Pattern measures 9½ ins. x 6¼ ins.



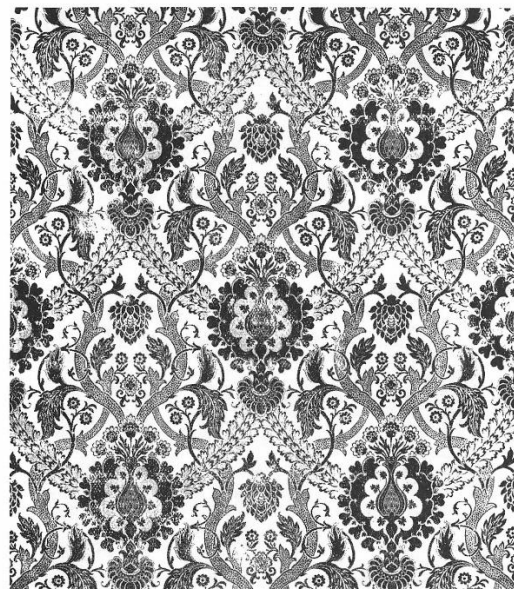
**"Ranworth" Silk.**  
**48-in. wide.**  
 Pattern repeats at 45-in.



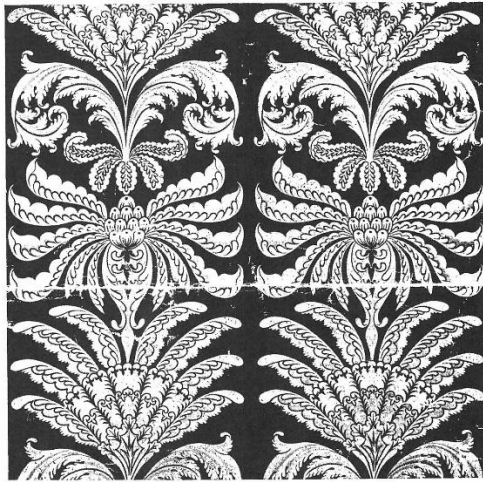
**"S. Osmund" Damask.**  
**28-in. wide.**  
 Pattern measures 14-in. x 14-in. and uses any way.



**"SALISBURY" DAMASK.**  
 50 ins wide  
 The pattern repeats at 13 1/2 ins.  
 Print shows half-width  
 A very finely woven heavy pure silk damask.



**"SARUM" TAPESTRY.**  
 (SILK and COTTON).  
**50-in wide.**  
 The pattern repeats at 33 ins. and this print shews the  
 full width of the material.



**"SEVILLE" BROCADE,**  
50-ins. wide.

(Silk and Artificial Silk).

The pattern repeats at 40-ins., and the two lateral designs are spaced so that they can be braided or cut for panels without loss of pattern.

This print shows full width.

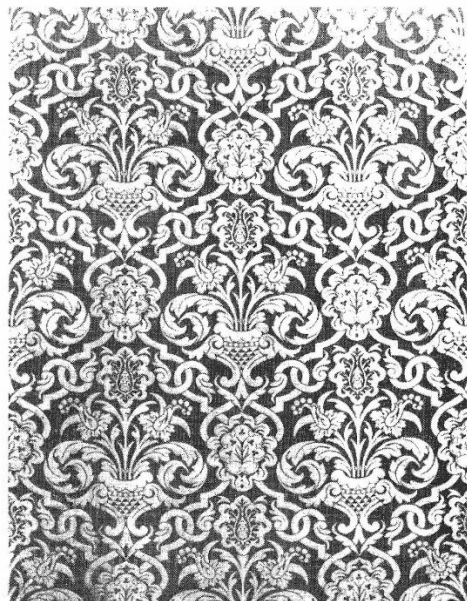


**"Sherborne" Silk Tapestry.**

50-ins. wide.

The pattern repeats at 34-ins. and the material is reversible.

This print shows half the width.

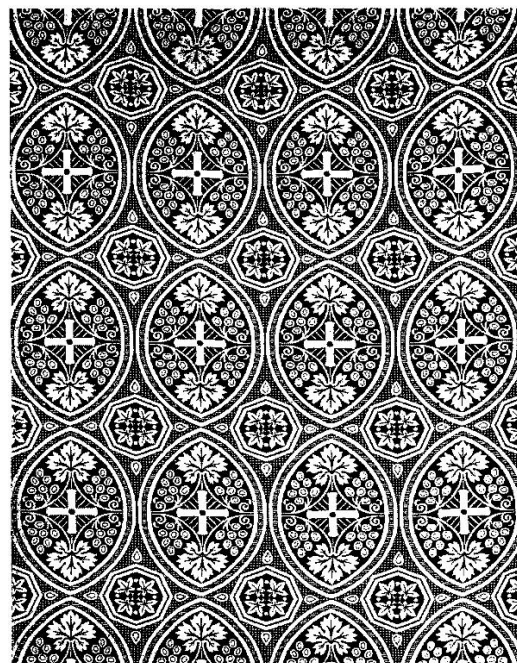


**"SOUTHWARK" BROCADE**

50 ins. wide.

The pattern repeats at 17 ins.

Print shows half width.

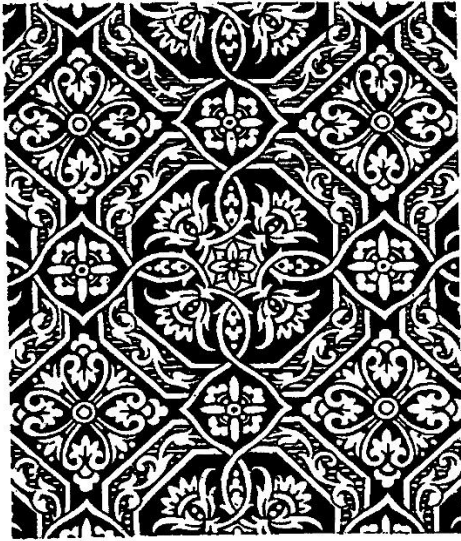


**"ST. CROSS" BROCADE.**

50 ins. wide.

The pattern repeats at 8½ ins.

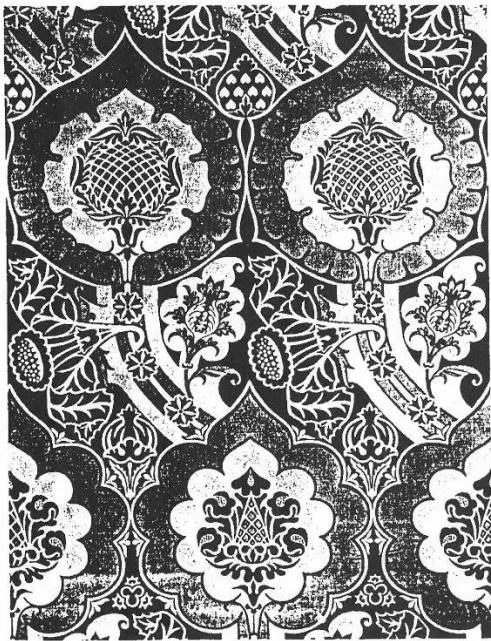
Print shows half-width.



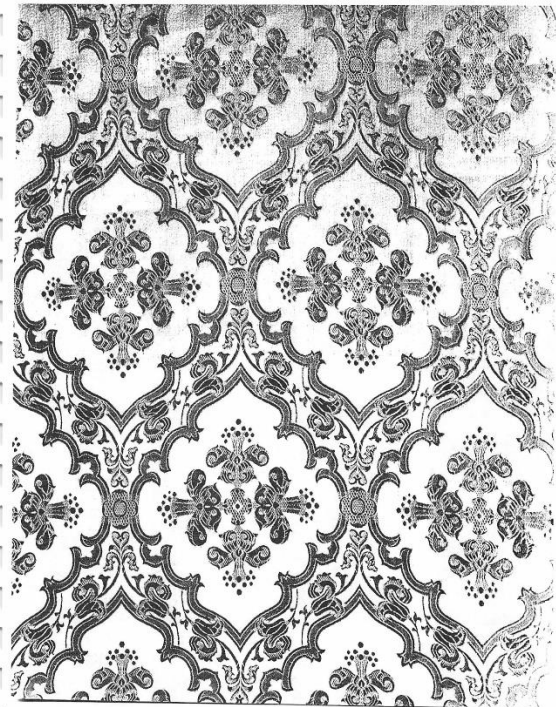
"TEWKESBURY" Coteline.  
 52-in. wide.  
 Pattern measures  $8\frac{1}{2} \times 8\frac{1}{2}$ -in.  
 and can be used any way.



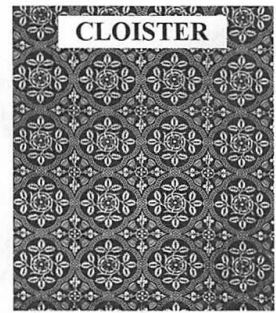
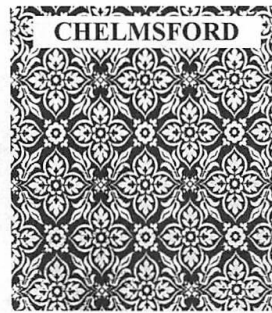
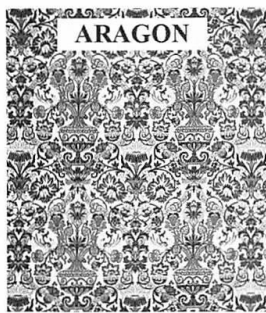
TUDOR BROCADE



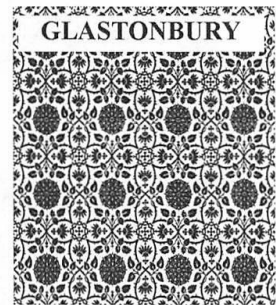
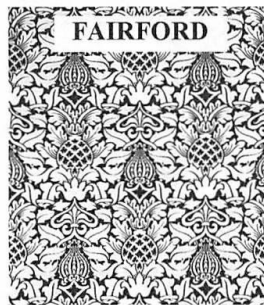
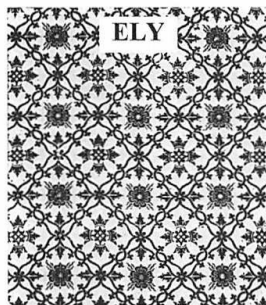
"VAN DER WEYDEN" BROCADE  
 52 ins. wide.  
 The pattern repeats at 41 ins.  
 Print shows half-width.



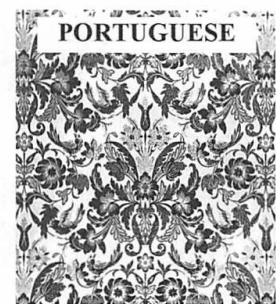
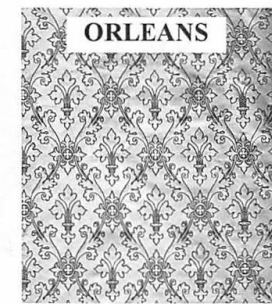
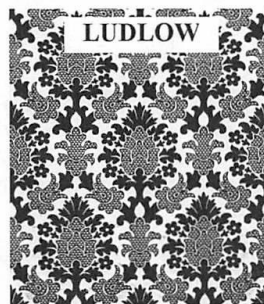
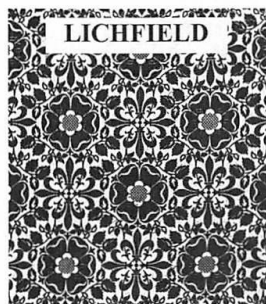
WOODSTOCK BROCADE



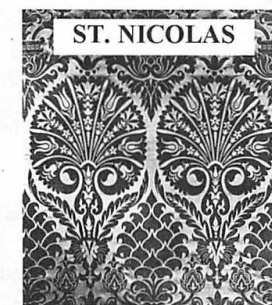
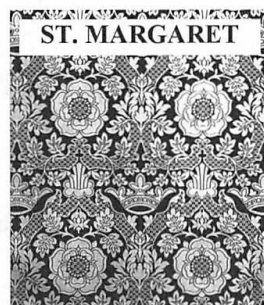
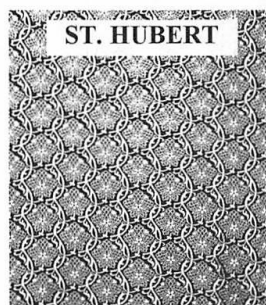
THESE DESIGNS



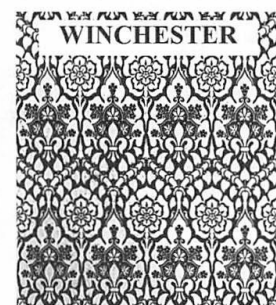
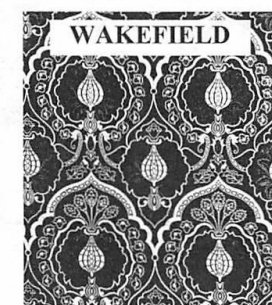
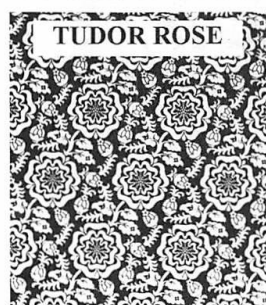
ARE CURRENTLY IN



PRODUCTION AND ARE



AVAILABLE FROM STOCK



## J. WIPPELL & CO. WORK NUMBER CODES

Might be found on the maker's label on items such as frontals and copes / chasubles / dalmatics / choir gowns etc.

Code Year	Code Year	Code Year	Code Year	Code Year	Code Year
XA 1866	YA 1893	ZA 1918	AA 1944	BA 1970	CA 1995
XB 1867	YB 1894	ZB 1919	AB 1945	BB 1971	CB 1996
XC 1868	YC 1895	ZC 1920	AC 1946	BC 1972	CD 1997
XD 1869	YD 1896	ZD 1921	AD 1947	BD 1973	CE 1998
XE 1870	YE 1897	ZE 1922	AE 1948	BE 1974	
XF 1871	YF 1898	ZF 1923	AF 1949	BF 1975	
XG 1872	YG 1899	ZG 1924	AG 1950	BG 1976	
XH 1873	YH 1900	ZH 1925	AH 1951	BH 1977	
XI 1874	YI 1901	ZI 1926	AI 1952	BI 1978	
XJ 1875	YJ 1902	ZJ 1927	AJ 1953	BJ 1979	
XK 1876	YK 1903	ZK 1928	AK 1954	BK 1980	
XL 1877	YL 1904	ZL 1929	AL 1955	BL 1981	
XM 1878	YM 1905	ZM 1930	AM 1956	BM 1982	
XN 1879	YN 1906	ZN 1931	AN 1957	BN 1983	
XO 1880	YO 1907	ZO 1932	AO 1958	BP 1984	
XP 1881	YP 1908	ZP 1933	AP 1959	BQ 1985	
XQ 1882	YQ 1909	ZQ 1934	AQ 1960	BR 1986	
XR 1883	YR 1910	ZR 1935	AR 1961	BS 1987	
XS 1884	YS 1911	ZS 1936	AS 1962	BT 1988	
XT 1885	YT 1912	ZT 1937	AT 1963	BU 1989	
XU 1886	YU 1913	ZU 1938	AU 1964	BV 1990	
XV 1887	YV 1914	ZV 1939	AV 1965	BW 1991	
XW 1888	YW 1915	ZW 1940	AW 1966	BX 1992	
XX 1889	YX 1916	ZX 1941	AX 1967	BY 1993	
XY 1890-91	YZ 1917	ZY 1942	AY 1968	BZ 1994	
XZ 1892		ZZ 1943	AZ 1969		