

GLOSSARY of VOCABULARY, STITCHES and FABRIC DESIGNS

VOCABULARY

Alb - full-length white robe usually worn under vestments; tied at waist with a **Girdle** of white linen rope with tassels or knotted ends. *Measure h. from back of neck.*

Alms bags - rounded, rectangular, spade-shaped, on metal/wooden frame. ?lined?
Measure h. x max. w. cm

Altar cloth/Fair linen cloth - length of white, fine fabric the width of the table top, to hang down at each end. Can have four or five crosses to mark corners and centre.
Measure l. x w. cm

Altar cover - length of cloth used to cover over and protect the altar-cloth.
Measure h. x w. cm

Amice - large rectangle (average 90 x 55 cm) of white cotton/linen/poly-cotton with long tapes from 2 corners on long side. Worn around neck below robes. Can have attached an *apparel*. *Measure l. x w. cm*

Amice apparel - decorated band of fabric on an amice, worn at the back of the neck. Usually to match chasuble; can be fixed or removable. *Measure l. x w. cm*

Antependia - a covering hung over the front of the altar, which may be a panel of wood, metal or fabric.

Apparel - decorated horizontal band of matching fabric on a dalmatic or tunic, joining the clavi; can be worn attached above the hem of an alb; can be fixed or removable. *Measure l. x w. cm*

Banners - Mothers' Union, Sunday school, British Legion etc., unglazed. State fixing /support. Can be partly or completely painted. ?lined? *Measure h. x w. cm*

Book markers *Measure l. x w. cm*

Burse - square, stiffened hinged case in liturgical colour, usually decorated, used to carry the corporal. Sits on top of the chalice for communion service. ?lined?
book-style - front and back joined together on "spine"; *hinged* - 2 twisted thread hinges;
bellows-style - with tapered gusset *Measure sq.*

Carpets, mats and rugs *Measure l. x max. w. cm*

Cassock - ankle-length gown, double- or single-breasted, worn by clergy (black), lay ministers, choir members (coloured), vergers, servers, Bishops (violet or purple), scarlet denotes "by royal appointment". *Measure h. from back of neck.*

Cassock-alb - a modern, full-length, white garment which combines a cassock, an alb and an amice. It can be in a variety of styles, single- or double-breasted, with or without a hood. *Measure h. from back of neck.*

Chalice veil - large lined square (av. 50 x 50 cm sq.) in liturgical colour rich fabric to cover the chalice, paten and burse. Can be ornamented centrally or on one edge.

Chasuble - in liturgical colour, often of damask or brocade, or plainer fabric.
See diagram page 9.

Gothic chasuble - based on a circular shape with a hole for the head (conical chasuble). Can have pillar, Y-shaped or Tau-cross orphreys as vertical central decoration.

Pallium orphrey - narrow Y-shaped strip with embroidered crosses around the neck and short way down the front (*inside Churches p. 44*)

Latin chasuble - more like a tabard worn over the head, in similar rich fabric and ornamentation.

Fiddle-back chasuble - has the sides cut away so is even less heavy to wear.
?lined? Measure h. from back of neck.

Choir robes/gowns, collars, cuffs, caps - look for maker's label. *Measure h. from back of neck/basic measurements only.*

Ciborium veil - similar to a shaped Chalice Veil but with a central hole to fit over the lid finial; might be circular. *Measure h. x w. / diam. cm*

Cinture - a broad waist-band or sash, piped with red or black, with falls. Worn by Bishops and Deans. *Measure h. x w. or diam. cm*

Clavi (singular *clavus*) - vertical bands, often embellished, extending over the shoulders on either side of a Dalmatic or Tunicle. *Measure w. cm*

Colours - see **Recording Army Standards, Guidons and Colours** (p. 11).
Include poles and supports.

Cope - rich semi-circular cloak with a central front opening. Can have a hood (rounded, square, pointed, shield-shaped). Front edges are held together by a Morse. *?lined?*
Measure h. from back of neck x diam. cm.

Corporal - large fine white cloth (av. 55 cm sq.), folded in three, then three again; stored in Burse and spread beneath chalice for communion. Can be embroidered with five crosses, or one centrally, or on one edge. *Measure cm sq.*

Cotta - short white cotton or polycotton surplice with square neck, worn over a cassock, sometimes decorated with rows of embroidery or lace. *Measure h. from back of neck.*

Credence cloth - white, used on the Credence table. Variable size and source (eg large tray-cloth!). *Measure l. x w. cm*

Curtains, riddel curtains - *Measure h. x w. cm*

Where applicable, include all metal and wooden fittings, eg posts, poles and rails.

Cushions - *measure w. x d. cm*, unless there is an obvious height (*h. x w. x d. cm*)

Dalmatic - worn by the deacon, part of a set with the chasuble and tunicle, being of same fabric and liturgical colour. Like a tabard with wide sleeves and slit sides. Decorated with two vertical **clavi** (w. cm) which run over the shoulders, and two horizontal **apparels** (w. cm), back and front. *?lined? Measure h. from back of neck,*

Dossal - hanging curtain behind altar. *?fixing? ?lined? Measure h. x w. cm*

Where applicable, include all metal and wooden fittings, eg posts, poles and rails.

Fair linen cloth/Altar cloth - long white linen cloth covering altar top and hanging down at each end. Can have four or five crosses to mark corners and centre. *Measure l. x w. cm*

Falls - pulpit and lectern *?how stiffened and fixed? ?lined? Measure h. x w. cm*
If has book-rest, *overall h. x w. cm*

Flags - see Colours

Frontal - hanging, framed or fixed to the front of the altar, usually of damask or brocade in liturgical season colour; can be decorated with two or more orphreys (*w. cm?*), have central embroidery or ornamentation, fringe (*h. cm?*) at lower edge. *Lined?. How fixed? Measure h. x w. cm*

Might have a **superfrontal** (*h. cm*) attached (integral). *?lined? ?orphreys or decoration? How is it held in place?*

Might have an extension over the altar top. *Measure h. x w. x d. cm*

Frontlet - use for a white altar cover with a decorative border of lace or crochet lace (*h. cm*) which hangs down across the top of a frontal. *Measure l. x w. cm*

Funeral pall - large cloth in funereal colours placed over a coffin on a bier/stand.
Measure l. x w. cm

Girdle - twisted cord, often with fringed ends, worn by clergy. *Measure l. cm*

Gown - *Measure h. from back of neck*

Guidons (see **Recording Army Standards, Guidons and Colours p. 11**)

Humeral veil - scarf to match chasuble worn across minister's shoulders. From 1960s will only be of cloth of gold. Used to carry reserved sacrament to the tabernacle. *Measure l. x w. cm*

Houselling cloth - very long plain cloth used at communion rail. Out of fashion.
Measure l. x w. cm

Kneelers - **Measure h. x w. x d. cm**

Jacksons of Hebden Bridge catalogue on their website www.churchkneelers.com shows most 21st C. designs

Lappets - tabs hanging down from back of a mitre, or from white collar of a preacher

Laudian frontal - a rectangular cover in liturgical colour or all-season fabric, with rounded corners, covering the altar and down to the ground. *Measure l. x w. cm*

Lavabo towel - white, rectangular, of suitable fabric (variable!) for minister to dry hands.
Measure l. x w. cm

Liturgical colour order - purple, white/cream/gold, green, red, black, blue, all-season

Maniple - similar to Stole but only about l. 100 cm, usually tapered, joined mid-way to form a loop worn over the left arm of the celebrant. *Measure l. x w. min. - max. cm*

Mass set - **High Mass** set consists of Chasuble, Dalmatic and Tunicle, burse and veil, two stoles and three maniples.

Low Mass set consists of chasuble, burse and veil, stole, maniple.

Record together as a set, with any matching apparels, alms bags, falls.

Mitre - bishop's head-dress with lappets. *Measure max. h. x w. cm*

Morse - fabric or metal fastening of the front of a Cope. Can be very ornamental and jewelled.

Orphrey - On frontals, vertical strips of decorative fabric; can be embroidered, have appliquéd decoration, braid or ribbon edging. If only attached at top edge, *hanging orphrey*.

On vestments, pillar, Y-shaped, cross or Tau-cross orphreys as vertical central decoration. *Measure w. cm*

Palla (pl. pallae) - small square, stiffened (with card or plastic square) envelope of white fabric, sometimes embroidered; average 15 cm sq.

Purificator - white fine linen/cotton cloth approx. l. 35 cm but very variable (even find handkerchiefs being used!), with or without central cross. *Measure l. x w. cm*

Riddel - curtain or hanging suspended from riddel posts flanking either side of the altar. *Measure h. x w. cm*

Standard (see **Recording Army Standards, Guidons and Colours p.11**)

Stole - sometimes black, usually in liturgical colour, about l. 200 cm, with decorated ends. Might be shaped, lined, have a cross at the central neck. *Measure l. x w. cm*

Superfrontal - a decorated band of matching or complimenting fabric hanging from the top of the frontal; might be fringed.

If **integral** it is joined to the top of the frontal.

If **separate**, might be attached to a plain fabric cover over the table top, with counter-balance metal rod in sleeve. *Measure h. x w. cm; h. x w. x d. cm if covers altar top.*

Surplice - White cotton /polycotton garment reaching to below the knees, with full sleeves, worn over robes. *Look for makers' label. Measure h. from back of neck.*

Tunicle - worn by the sub-deacon. Similar to Dalmatic but with one apparel (*w. cm*). *Measure h. from back of neck, w. of clavi, w. of apparel.*

Veil - large square in liturgical coloured silk/fabric, *lined?*; might be decorated with cross at one central edge, or in centre. Covers the chalice, paten and burse for communion. Also used for chalice-shaped Ciborium. *Measure l. x w. cm or cm sq.*

Wall hanging if unglazed (otherwise goes in Paintings etc). *Describe, materials and techniques used, how suspended, ?lined? Measure h. x. w. cm*

Waxed cloth - used to cover a stone altar top to prevent damp affecting the altar cloths. *Measure l. x w. cm*

USEFUL DESCRIPTIVE VOCABULARY

Agnus Dei with (or without) banner of Victory

applied - decoration which is sewn or stuck on

appliqué - ready-made decoration which is then sewn to the fabric

arabesque - repeat scrolling, foliate/floral design

baize - light-weight open wool fabric with teased surface

beads / pellets - raised round applied decorations

braid - decorative, woven, applied fabric strip

brocade - woven pattern in *more than one colour*

buckram - use for stiffening

bullion - fine wire evenly twisted in spiral form

bump(f) - coarse, double-sided nap fabric use for interlining

calico - sturdy cotton fabric

canvas work - stitching worked on holed canvas. *Measure number of holes per inch.*

Chi Rho - see *Inside Churches p. 24*

corduroy - ribbed cotton fabric with soft velvety feel

couching - one, usually two or more, threads are laid flat and small stitches are made with a separate needle and thread across them (couched) at regular intervals to hold the threads down (see *diagram in **Stitches** p.19*).
Couching is usually used with solid heavy threads such as gold, silver, or cord, but can be used with silks and floss, unlike *laid-work*.

cross-stitch - just that! (see ***Stitches** p.19*)

damask - figured material, self-woven single colour (think of damask table napkins!)

diapered - sprinkled with small regular decoration

drawn-thread work - used on loosely-woven material, then worked with needle-weaving

Dupion - synthetic, slightly slubbed fabric

embellishments - additional ornamentation

fabrics - brocade, canvas, cotton, cotton lawn (very fine), cotton poplin (robust), damask, Dupion (synthetic, slightly slubbed fabric), felt, flock, grosgrain, linen, moquette, nylon, Rayon, repp, serge, silk, synthetic, tapestry, twill (weave goes diagonally), velvet, velveteen, waxed cotton

foliate - leafy

floral - flowery

floriated - decorated with flowers and leaves

fringes - *stepped* if in blocks of different colours; on self-heading; on braid heading; knotted

glazed cotton - slightly stiff cotton with a shiny top surface

gold-coloured - *use when threads are not pure metallic gold!*

gold thread - real gold thread eventually tarnishes and darkens

grosgrain - ribbed-effect stiff ribbon/fabric with thick transverse ribs

guilloche - inter-woven repeating scrolling (see *Inside Churches* p. 55)

jacquard - fabric with woven complex pattern

jap (Japanese) thread - a gold thread with very fine gold paper twisted round an inner very fine core which, when worn, shows through as red or yellow thread

kid - silver / gold fine leather. Gold kid has been popular since about 1960.

lace - machine-made, bobbin, crochet, tatting

laid-work - looks similar to *couching* but is only used for silks; the whole surface is covered first with threads lying flat, and then a few stitches are added to keep the silks in place, thus giving a sheen.

lamé - woven fabric of metallic fibre, usually gold, silver or copper-coloured

linen - crushes when scrunched up; feels cool; in various qualities from fine to coarse and unbleached

Lurex - a woven metallic fabric from circa 1946. NB trade name, has cap. L

mesh-work - on some ornate embroidery / tassel heads

moiré - self-coloured, water-marked effect fabric, usually silky

moquette - thick pile, tight curly-tufted furnishing fabric

nylon - slippery synthetic fabric. From 1939.

passing - smooth bright gold or silver strips wound round fine thread, resembling wire. When used couched gives a smooth, filled gold appearance.

pellets / beads

plate - flat strips of metal thread used for embroidery

polyester - a synthetic fabric less prone to crumple. From 1946.

powdering - flower, leaf, bird motifs sprinkled on background

rayon - semi-synthetic fibre (originally made from wood cellulose), a form of artificial silk, from 192.

repp - transversely finely corded sturdy fabric (nothing like corduroy!)

Rexine - Looks like synthetic leather. NB trade name, has cap. R.

ribbon - narrow woven strips

sacred monogram ihc /, IHC /, ihs / or IHS /. State in what type of lettering.

satin - shiny, slippery, smooth on top surface, matt on underside

scalloped - repeated rounded edging

scrolling

serge - woollen cloth with diagonal weave

silk - made from silk worms, crushes when scrunched up. Sometimes is corded.

spangles - like small sequins, of gold or silver, possibly tarnished

stepped - blocks of various colours (as in a fringe)

stitches - see Inside Churches (p.154-155) and see **Stitches** (p. 18-20) below

stylised - useful description!

synthetic fabric

tent stitch - first half a cross stitch, repeated diagonally (see **Stitches** p. 20)

taffeta - a fine, lustrous, usually synthetic fabric, not as rich as satin

tendrils - often found embroidered in axils of cross, or in foliate scrolls (like those on sweet-peas)

twill - type of weave producing a diagonal line in the fabric

vandyked - usually applies to V-shaped lace edging

velvet - proper velvet is woven with silk (ref. Watts)

velvet / velveteen - of cotton or synthetic fibres

flock velvet - sprayed velvet effect on cotton backing, popular with the Victorians. Has been found used as an altar frontal.

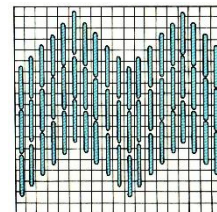
viscose - (artificial silk) a soft semi-synthetic fabric which will crumple. Invented in 1890s.

STITCHES

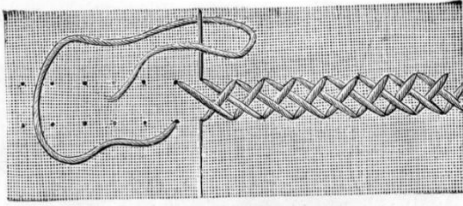
Back stitch



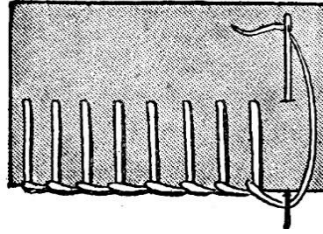
Bargello



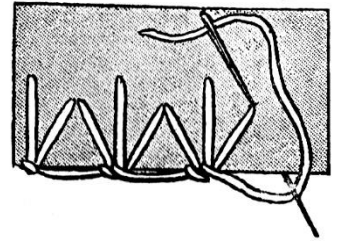
Basket stitch



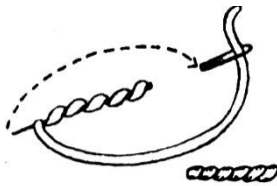
Blanket stitch



Blanket stitch - fancy



Bullion stitch



Buttonhole stitch



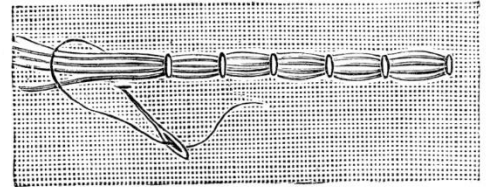
Chain stitch



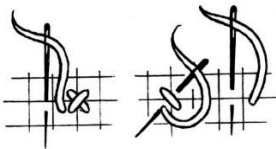
Chevron stitch



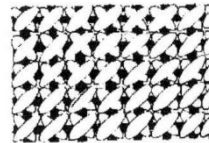
Couching



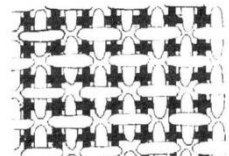
Cross stitch



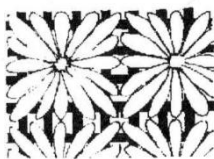
Cross stitch



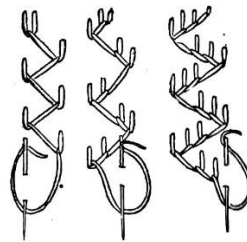
Upright cross stitch



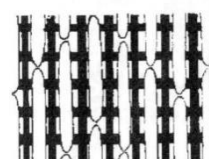
Eyelet stitch



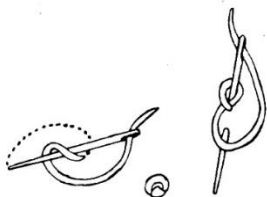
Feather stitch - 3 versions



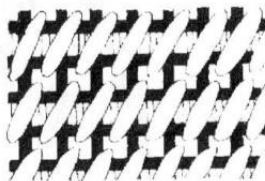
Florentine stitch



French knot



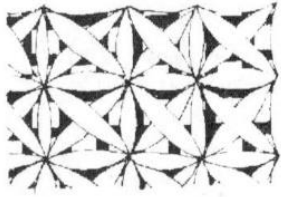
Gobelin stitch



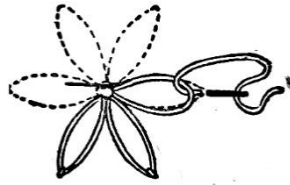
Herringbone stitch



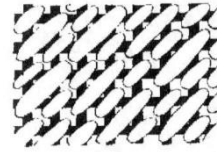
Italian stitch



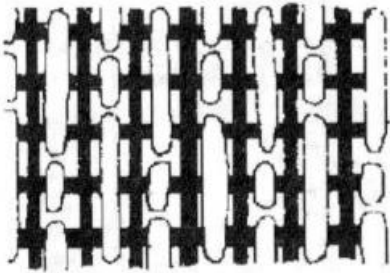
Lazy daisy stitch



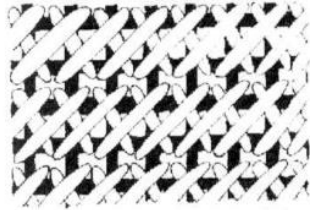
Mosaic stitch



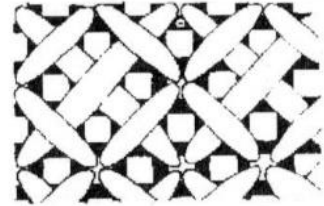
Parisian stitch



Plait stitch



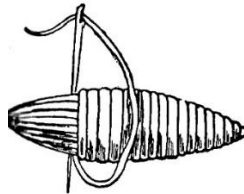
Rice stitch



Satin stitch



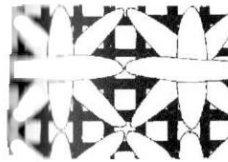
Satin stitch (padded)



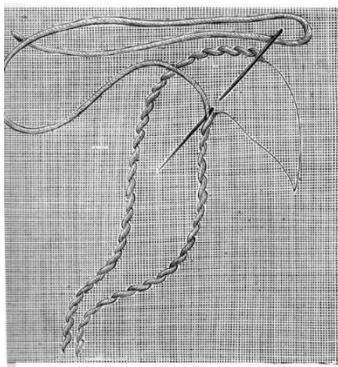
Split stitch



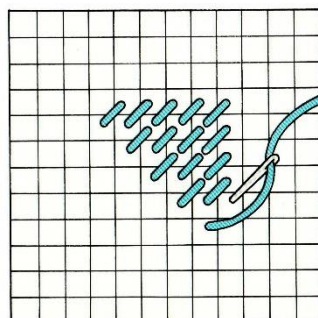
Smyrna stitch



Stem stitch



Tent stitch



Upright cross

